



RESIDENCE

1 Norwood Terrace, Uddingston, G71 6HY

www.residenceestateagents.co.uk



Viewing by appointment with Residence Uddingston

T: 01698 444222 | E: uddingston@residencestateagents.co.uk | A: 61-63 Main Street, Uddingston, G71 7EP



RESIDENCE





3 Bedrooms | 1 Public Rooms | 1 Bathrooms

This attractive three-bedroom semi-detached home offers spacious, well-presented accommodation ideally suited to modern family living. Set within a desirable residential area, the property benefits from a private driveway to the side, providing convenient off-street parking.

On entering the home, you are welcomed into a bright and inviting interior. The ground floor features a large open-plan lounge which flows seamlessly into the dining area, creating an excellent space for both everyday living and entertaining. Large windows allow natural light to flood the room, enhancing the sense of space and comfort. The modern fitted kitchen is thoughtfully designed with ample storage and worktop space and is positioned to the rear of the property. From here, there is direct access to the private, enclosed rear garden, making it ideal for outdoor dining, children's play, or simply relaxing in a secure and secluded setting.

The upper level comprises three well-proportioned bedrooms, each offering flexibility for family members, guests, or working from home. A contemporary family bathroom completes this floor, finished with modern fittings and a clean, stylish design.

A particular highlight of the property is the floored and lined attic space, accessed via a convenient drop-down ladder. This versatile area offers excellent additional storage or potential for a variety of uses, subject to requirements.

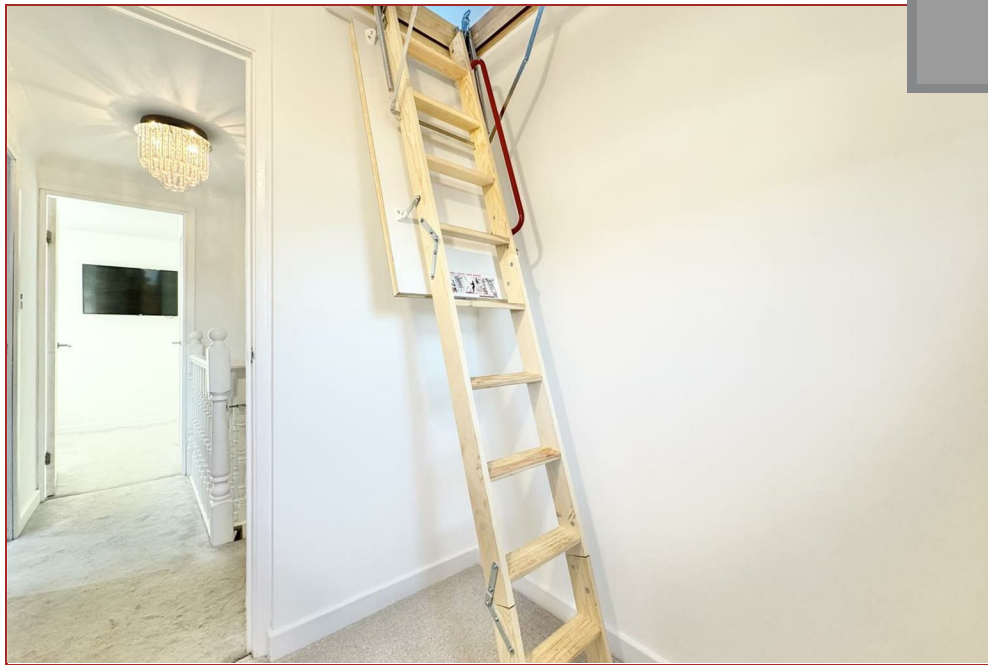
With its bright open-plan layout, modern finishes, private garden, and valuable attic space, this home represents an excellent opportunity for buyers seeking a comfortable and practical property in a sought-after location.



667.36 sq ft | EER = C



RESIDENCE







Norwood Terrace



Floor Plan measurements are approximate and are for illustrative purposes only. While we do not doubt the floor plans accuracy, we make no guarantee, warranty or representation as to the accuracy and completeness of the floor plan. You or your advisors should conduct a careful, independent investigation of the property to determine to your satisfaction as to the suitability of the property for your space requirements.

Produced by Plush Plans Ltd

We believe these details to be accurate; however, they do not form any part of a contract. Fixtures and fittings are not included unless specified in the enclosed. Photographs are for general information and it must not be inferred that any item is included for sale with the property. All distances and measurements are approximate. Floorplans may not be to scale and are for illustration purposes only.